

EAGLE

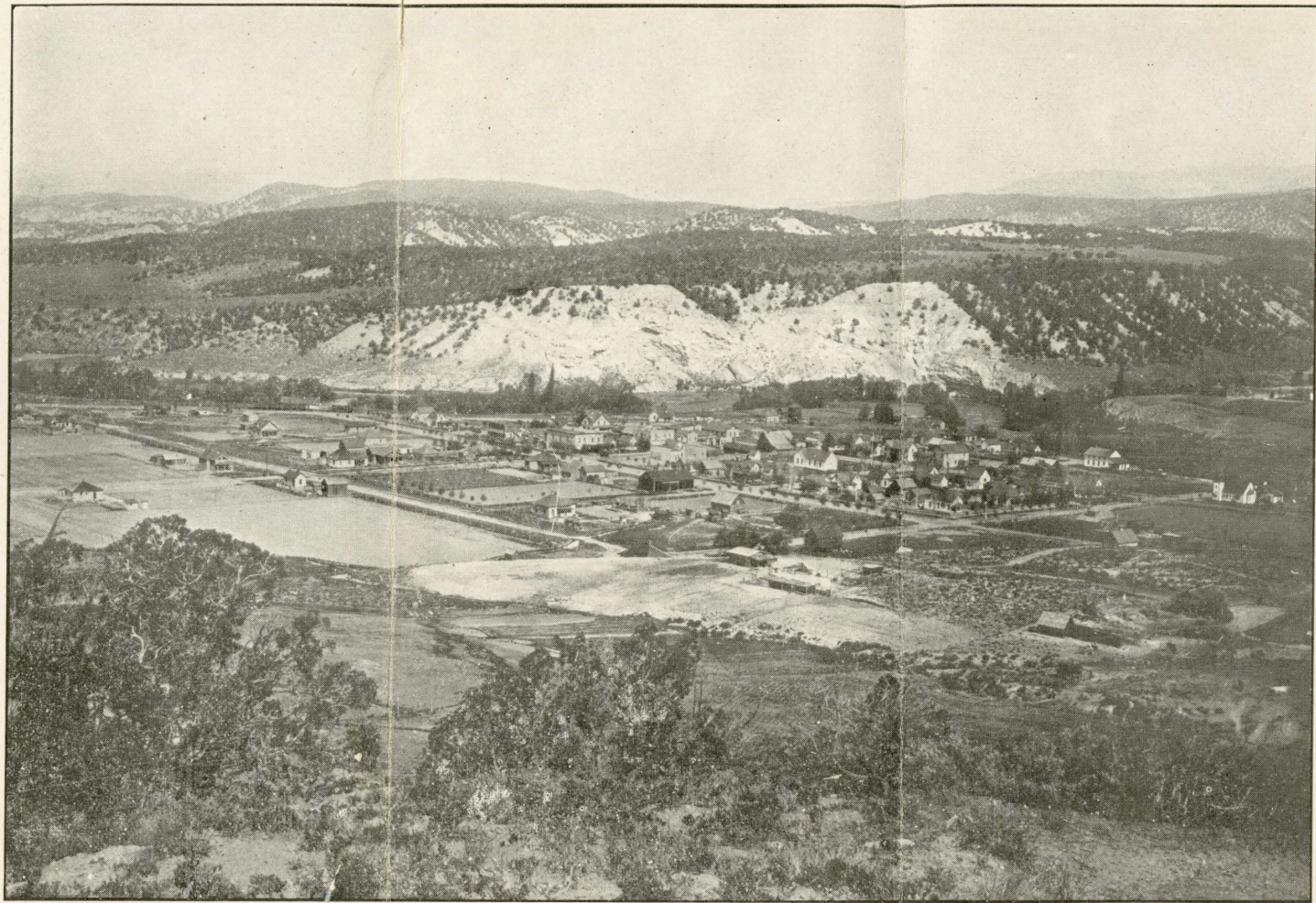
AND

EAGLE

COUNTY

COLORADO

1912



View of Eagle, Colorado

OFFICERS:

H. FESLER,
President.

FRANK DOLL,
Vice President.

LLUIS SCHWARZ, ARTHUR A. TANDY,
Cashier. Assistant Cashier.

DIRECTORS:

C. PARKS J. H. FESLER FRANK DOLL
J. H. DEVEREAUX LOUIS SCHWARZ

The First National Bank of Eagle County

The Only National Bank in Eagle
County

STATE DEPOSITORY

Our Banking Facilities are
Second to None in the State

Eagle, - Colorado

C. E. DICKINSON

J. F. OWINGS

Dickinson & Owings

DEALERS IN LUMBER, PAINTS,
OILS, GLASS AND HARDWARE

All kinds of finishing lumber,
mouldings, doors, windows, lath
and shingles, fire clay and brick,
tar and building paper, plaster
hair, malthead, cronolite and
rubberoid roofing and cement.

Let us figure your bill—See our local
manager

FRANK FOX, Eagle, Colo.

Are You Looking

for the best and the most that your
money will buy? Then if you are
you should lose no time in making
our store your store. * * *

A full line of the best quality of
staple groceries and merchandise.

ROCKY MT. STORES CO.
EAGLE, COLO.

E. E. Glenn & Co.

GENERAL MERCHANDISE

Agents for Deering Machinery and
John Deer Plow Company

EAGLE POSTOFFICE STORE

T. A. HOWES

Conducts the Largest Dry Goods
Establishment on the Western
Slope

ALL KINDS OF FURNISHING GOODS

EAGLE, = COLO.

Eagle Cash Bakery
and Grocery

WE BUY AND SELL FOR
CASH, AND THEREFORE
HAVE NO BIG PROFITS
TO MAKE. ❁ ❁ ❁

MRS. M. E. NESTER

Eagle Not the Largest
But the Best Town in
Colorado

E



AGLE, Eagle county, Colorado, is located about one hundred and twenty-five miles due west of Denver. It is on the main line of the Denver & Rio Grande railroad, on the Eagle river fifteen miles above where it flows into the Grand river. Eagle has the reputation throughout the state of being one of the most substantial business towns in the state of Colorado.

This reputation is well deserved and carefully maintained, as the appearance of the homes and business houses throughout the town give evidence of a thrift and prosperity that is quite unusual to find.

The following lines of business are represented:

- One Hotel.
- One Dentist.
- One Jeweler.
- Two Saloons.
- Two Drayage.
- Two Lawyers.
- One Pool Hall.
- One Newspaper.
- One Drug Store.
- One Restaurant.
- One Blacksmith.
- One Meat Market.
- Three Physicians.
- One Livery Stable.
- One Grocery Store.
- One Harness Maker.
- One National Bank.
- One Dry Goods Store.
- One Grain Storage Co.
- Three Rooming Houses.
- Two Cement Contractors.
- One Barber Shop with Baths.
- One First Class Opera House.
- Three Contractors and Builders.
- Four General Merchandise Stores.
- One Lumber Yard and Hardware.
- One Central Telephone Exchange.

There is an excellent location for the follow-

ing lines of business: Tailor, laundry, undertaker, plumber.

Eagle has a town site as level as a floor, well kept streets, with a beautiful system of shade trees bordering good walks.

It has a fine \$26,000 municipal gravity water plant of pure mountain water, a three block park in the center of the town, an excellent school with manual training, one Methodist church, (a Catholic church in course of organization) a system of electric lights in process of negotiation that will make Eagle the best lighted town on the Western slope.

More building has been done at Eagle the past year than any town of like size in the state, with ample indications that last year's building activity will be doubled the present year.

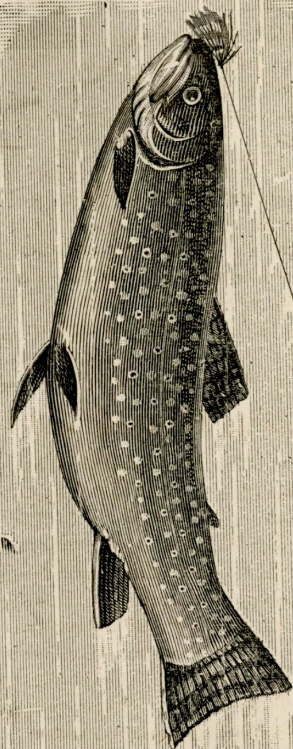
The social side of life in Eagle is not neglected as will be seen from the following fraternal orders, social clubs, and women's clubs: Masons, Woodmen, Bachelors, Eastern Stars, Circle, Sewing Club, Merry Wives of Eagle, Literary Club.

The town maintains a free skating rink in winter when the weather affords ice and a first class base ball ground in summer.

HEALTH AND CLIMATE

In all Colorado, justly famous as a state where thousands upon thousands have been restored to health, there is not a more beautiful or healthful section to be found anywhere than Eagle.

From Eagle magnificent mountain scenery is to be seen in every direction, each group of mountains varying in their own particular kind of beauty, some with snow covered peaks the year around, others covered with green timber, and



Six Pound Trout Caught in Eagle River

Eagle river is noted for trout fishing, which can be found within fifty yards of the limits of the town of Eagle and along the Brush creek branch of the Eagle river about one-half mile distant.

still others of the red sandstone that take on varying hues as the course of the sun changes throughout the day.

Radiating from Eagle in all directions excellent roads carry one through ever varying scenes of shifting interest from agriculture to mining, stockraising, placer mining, milling, lumbering, etc.

The climate might truthfully be said to be ideal in summer, neither too hot for personal comfort nor so cool but that ample fruits for domestic use are raised all over the county.

The winter months at Eagle are frequently pronounced as delightful as a California winter.

Camping, Hunting and Fishing

For outing trips some of the most ideal spots that can be imagined are within easy reach from the railroad.

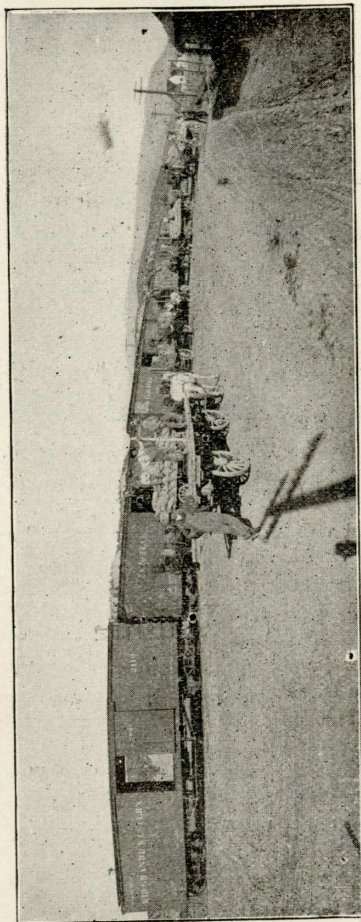
In the Fulford district are magnificent caves of shining crystals that are the equal of many highly exploited caves of natural wonders.

The Eagle river and its tributary streams have no superiors for good trout fishing, while both large and small game are as plentiful as anywhere in the state. There are no poisonous snakes or insects of any kind to make an outing disagreeable.

A short distance to the west of Eagle lies a most interesting geological wonder, an extinct volcano, with acre upon acre of lava beds, a sight well worth going to see.

WHAT WE RAISE

Eagle lies in the center of the rich Eagle Valley agricultural district which contains in ex-



Loading Produce at Eagle in the Fall of the Year

cess of 20,000 acres of irrigated land, worth on an average \$150.00 per acre. On these lands are produced three principal crops—potatoes, oats and hay.

Potatoes

In the quality of potatoes raised, Eagle county leads all other counties of Colorado, taking sweepstake prizes at all local and state fairs wherever we have exhibited. Our potatoes are shipped north, south, east and west—south to San Antonio and Houston, Texas, where they are used six months of the year from October to April, west to Salt Lake and California, and north and east to Denver, Kansas City, St. Louis, Chicago, Philadelphia and New York.

Average Production

The average crop of potatoes raised in Eagle county is 300 bushels or 150 sacks per acre.

The average price received is 50 cents per bushel or ninety cents per hundred.

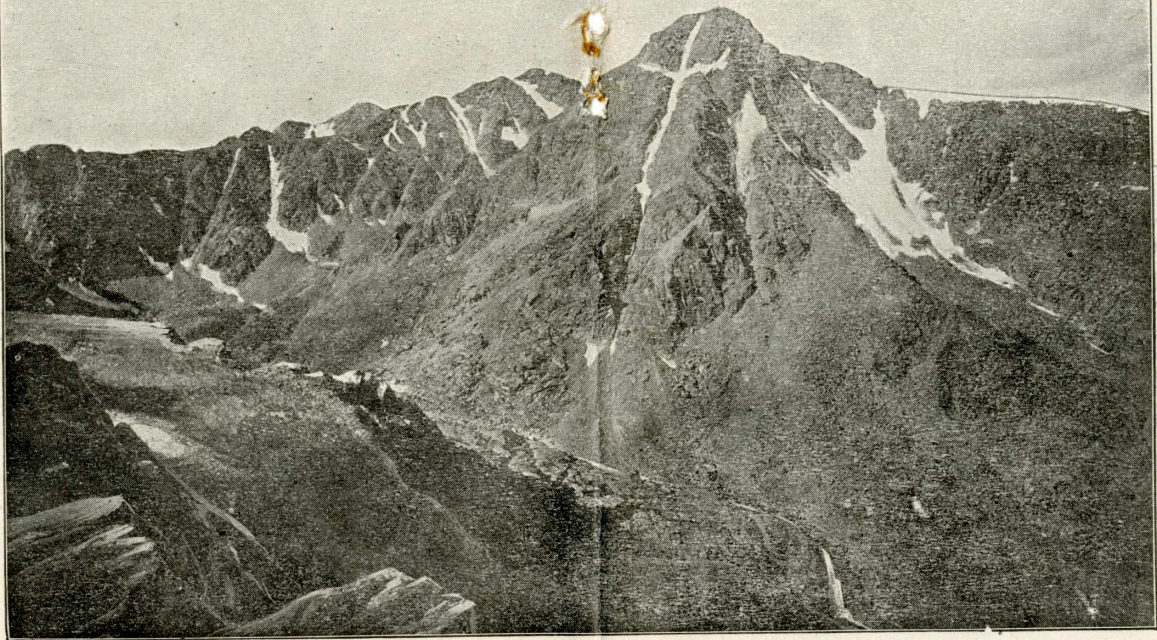
The average net profit of all potatoes raised in the county has been conservatively estimated at \$10.00 per acre.

Hay, Oats and Wheat

Timothy and alfalfa mixed produce five tons per acre, and is considered the very best for stock feed.

Oats average 75 bushel per acre and are of an exceptionally high quality.

Wheat averages about 40 bushels per acre, but does not pay as well at the present time as oats owing to a lack of adequate milling facilities.



Mount of the Holy Cross, Eagle County, Colorado

Travelers crossing the backbone of the Rocky Mountains over Tennessee pass may view at one particular point along the line of the Denver & Rio Grande railroad that world famous mountain, which was christened by spanish monks two hundred years ago—"Mount of the Holy Cross."

The Holy Cross region included in favored Eagle county is by every phase among the most

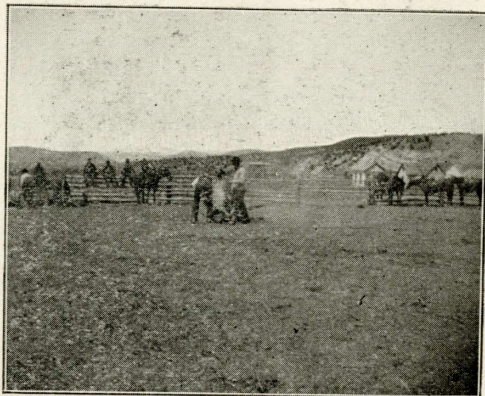
favorable camping, fishing and hunting places. Moreover, to the scientist, varied rock formations; to the artist, marvelous vistas of valleys, brook and range, most beautiful effects of sunshine, cloud and shadow, and entrancing sunsets, to the weary and ill, peace and health; to the hale and hardy, added vigor. Mount of the Holy Cross is indeed one of Colorado's scenic attractions.

STOCK

There are in Eagle county over 50,000 head of cattle, 3000 horses and 5000 sheep.

Stock is brought in off the range in December and turned out again in March and is usually fed about three months.

Stockraising is one of the most profitable in-



Familiar Scene in Eagle County

dustries of our county, the annual loss not exceeding two per cent.

In the matter of ranges for stock of all kinds none finer are to be found in the entire state than those of Eagle county.

LANDS THAT CAN BE IRRIGATED

There is in this valley a large amount of mesa land (upland) which is somewhat more difficult to

get water to than the ranches that were first taken up lower down in the valley, but whose soil is considered equal to the very best. Some of these lands may be irrigated by the aid of fluming, etc., while others may be best watered by means of storage reservoirs. There are a half dozen separate projects in this valley open to capital seeking irrigation investment. Water per acre costs from \$20 to \$45 and the land is worth when irrigated from \$100 to \$150 per acre, leaving a handsome profit to those interested in this class of investment.

CROP PRODUCTION

An 80 acre irrigated farm will on an average produce:

Twenty acres potatoes, net.....	\$2,000
Twenty acres oats and Twenty acres hay, net (Twenty acres pasture).....	1,000
	\$3,000

To make no mention of fruits, garden truck, etc., for home use, and allowing feed for teams and stock.

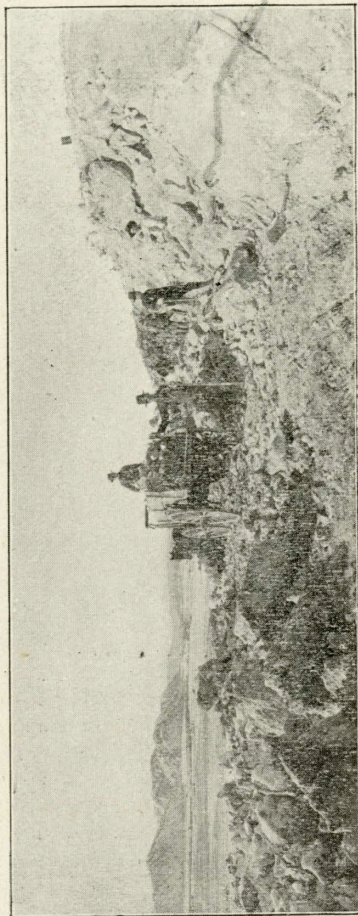
MINERAL RESOURCES

Eagle county has great mineral resources, the mining camps of Red Cliff and Gilman having already produced many millions of dollars in ore.

Adjacent to Eagle on the south lies the Fulford Mining District containing a vast body of proven mineral awaiting development, the ore here carrying gold, silver and copper.

Gypsum

In the immediate vicinity of Eagle, almost



Gypsum Quarry Adjacent to the Town of Eagle

within the town limits, lies one of the largest gypsum deposits in the state, running 98 per cent pure.

This deposit is but a few hundred yards from the Denver & Rio Grande tracks and could be economically operated from the standpoint of transportation facilities. Gypsum, when manufactured into the various building plasters, plaster of Paris, and land fertilizers, finds an increasing demand each year.

Portland Cement

Close to Eagle we have the constituents in large quantities for the manufacture of Portland cement.

TIMBER

Both north and south of Eagle but a few miles are millions of feet of pine and spruce timber which will supply the towns and ranches of this county for a long time to come. A number of successful mills are in operation.

The National Forest service policy protect timber lands from forest fires and from indiscriminate cutting, so that by the time one cutting is exhausted, another growth will have come to maturity.

IDEAL CONDITIONS

It will be seen from the foregoing that we have in Eagle and vicinity all the conditions that contribute towards a prosperous community and town—land, water, cheap power, timber and mineral.

EAGLE NEEDS

More farmers and ranches, capitalists who are in search of land, irrigation, or mining investments.

Manufacturers to utilize our immense gypsum deposits.

A tailor, undertaker, laundry, and plumber will each do well in Eagle.

MANUFACTURERS SEEKING A LOCATION

Eagle will be found to extend the following advantages:

An excellent gravity water system supplies the town with pure mountain water, and affords a fire protection service that is all that could be desired.

Cheap water for hydro-electric power

Factory sites convenient to railroad tracks.

Eagle does more business than an other town in the county, and for this reason has most liberal freight and transportation service.

Eagle is the only town in the valley that has a 24-hour station service, 24-hour telegraph and 24-hour telephone service.

Every passenger train both east and west is scheduled to stop at Eagle, with but one exception.

Eagle has no special tax, and her school levy of seven mills is the least of any town in the county.

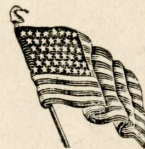
AN INDUCEMENT

To factories or educational institutions looking for locations Eagle will donate free building

sites, free water, and a remittance of taxes for a period of years.

For further information address all communications to

The Eagle Commercial Club EAGLE, COLORADO



Eagle Valley Enterprise

The Official Newspaper for Eagle County. Double the circulation of any paper in Eagle County.

Eagle, Colorado

The Broadway Bar

O. F. TRACY, Propr.

Eagle, - Colo.

The Eagle Club Bar

The place where you can get what you want. Good straight goods. Imported and domestic cigars. Pool hall in connection.

ZARTMAN BROS.,

Eagle, - Colo.

Eagle Pool and Billiard Hall

A LUMLEY, Propr.

SOFT DRINKS CIGARS

Eagle's Up to date
Amusement Place

EAGLE, - COLO.

Wiley's Drug Store



A neat and clean stock of
Drugs and Druggist's
Sundries

Mail orders given prompt attention



EAGLE, - COLO.

M. FULFORD

CONTRACTOR
AND BUILDER

Plans and Specifications Made
Estimates Furnished

Eagle, Colo.

W. A. GESNER

CEMENT CONTRACTOR

Cement Building Blocks
Sidewalks, Foundations
and Irrigating Ditches.

Eagle, - Colo.

Hot and Cold Water Baths
The Very Best Service

Hotel Montgomery

HEADQUARTERS
FOR TOURISTS

Reasonable Rates Homelike

MRS. A. MONTGOMERY,
Proprietress

EAGLE, - COLO.

The Eagle Livery, Feed and Sale Stable

JOHN BUCHHOLZ, Prop.

Excellent Rigs

GOOD DRIVING AND SADDLE HORSES

Eagle, Colorado

The Eagle Commercial Club

OFFICERS:

L. R. THOMAS,	CHAS. MAYER,
President.	Vice President.
H. P. OLESON,	A. G. BORAH,
2nd Vice President.	3rd Vice President.
E. E. GLENN,	G. T. HAUBRICH
Secretary.	Ass't Secretary.
DR. J. L. GREENE, Treasurer	

DIRECTORS:

E. E. GLENN	L. R. THOMAS
DR. J. L. GREENE	
H. P. OLESON	CHAS. MAYER
A. G. BORAH	G. T. HAUBRICH

EAGLE, COLORADO



ENTERPRISE PRINTERY, EAGLE, COLO